

1. ALL CONSTRUCTION METHODS AND MATERIALS USED IN THE CONSTRUCTION OF THE IMPROVEMENTS COVERED BY THESE PLANS SHALL BE IN ACCORDANCE WITH THE STANDARD TECHNICAL SPECIFICATIONS AND CURRENT REVISIONS ON FILE IN THE OFFICE OF THE CITY ENGINEER, CITY OF TOPEKA, SHAWNEE COUNTY, KANSAS. THE CITY ENGINEERS DECISIONS ON QUESTIONS REGARDING THESE PLANS SHALL GOVERN.

2. THE LOCATION OF ALL UNDERGROUND UTILITIES MAY VARY FROM WHAT IS INDICATED IN THESE PLANS. IT SHALL BE THE CONTRACTOR'S RESPONSIBILITY TO COORDINATE WITH THE UTILITY OWNER TO LOCATE AND FLAG ALL UNDERGROUND UTILITIES WHETHER INDICATED OR NOT. NO EXCAVATION SHALL BE PERMITTED IN THE AREA OF UNDERGROUND UTILITIES UNTIL ALL SUCH UTILITIES HAVE BEEN LOCATED AND IDENTIFIED TO THE SATISFACTION OF ALL PARTIES. ANY DAMAGE TO THE UTILITY SHALL BE REPAIRED OR REPLACED BY THE UTILITY COMPANY AT THE EXPENSE OF THE CONTRACTOR.

3. ALL PROPERTY PINS DISTURBED BY CONSTRUCTION SHALL BE REPLACED BY A LICENSED ENGINEER OR LAND SURVEYOR. THIS WORK SHALL BE SUBSIDIARY TO OTHER ITEMS OF THE CONTRACT.

4. FULL DEPTH SAWCUTS SHALL BE USED TO REMOVE A PORTION OF PAVEMENT OR CURB AND GUTTER. ALL SAWCUTS SHALL BE FULL DEPTH AND SHALL BE SUBSIDIARY TO OTHER BID ITEMS.

5. CONTRACTOR SHALL MAINTAIN CONSTRUCTION LIMITS WITHIN THE EXISTING RIGHT-OF-WAY.

6. CONTRACTOR SHALL SUBMIT A DETAILED WRITTEN TRAFFIC CONTROL PLAN FOR ALL PHASES OF THE PROJECT. CONTRACTOR SHALL ADHERE TO THE TRAFFIC SEQUENCING IN THE PLANS, UNLESS OTHERWISE APPROVED BY THE CITY OF TOPEKA.

7. CONTRACTOR PROVIDED TRAFFIC CONTROL SHALL ADHERE TO THE MANUAL ON UNIFORM TRAFFIC CONTROL DEVICES (MUTCD) AND THE TYPICAL DETAILS SHOWN IN THE PLAN SET. CONTRACTOR SHALL COMMUNICATE AND COORDINATE WITH HOMEOWNERS. MINIMUM HOMEOWNER ACCESS REQUIREMENTS ARE REQUIRED - SEE SPECIAL PROVISIONS IN THE CONTRACT DOCUMENTS FOR PERFORMANCE SPECIFICATION OF HOMEOWNER ACCESS.

8. THE CONTRACTOR SHALL SUBMIT TO THE ENGINEER, FOR APPROVAL, A DETAILED WORK SCHEDULE OUTLINING ESTIMATED TIME PERIODS FOR CONSTRUCTION OF SEGMENTS.

9. THE CONTRACTOR WILL BE RESPONSIBLE FOR ORDERING THE PROJECT SIGNS FROM THE CITY OF TOPEKA ON-CALL SIGN CONTRACTOR, WHICH IS ALL SIGNS, LLC, AND WILL ALSO BE RESPONSIBLE FOR PAYING ALL SIGNS, LLC. FOR THE SIGNS AT THE ESTABLISHED MATERIAL COSTS. THE SIGN DETAIL IS SHOWN ON CITY STANDARD DT-019. ANY ADDITIONAL COST TO INSTALL, MAINTAIN, AND REMOVE THE SIGNS AFTER PROJECT COMPLETION SHALL NOT BE PAID FOR DIRECTLY, BUT SHALL BE CONSIDERED SUBSIDIARY TO THE BID ITEM "PROJECT SIGN". CONTRACTOR SHALL RETAIN OWNERSHIP OF THE SIGN(S) UPON COMPLETION OF THE PROJECT. ONLY SIGNS IN NEW CONDITION SHALL BE INSTALLED AT THE COMMENCEMENT OF A PROJECT.

10. TRAFFIC CONTROL SHOWN IN PLANS AND TRAFFIC CONTROL DEVICES TABULATION ARE SHOWN FOR INFORMATION ONLY. ALL DEVICES AND FLAGGER OPERATIONS SHALL NOT BE PAID FOR DIRECTLY, BUT SHALL BE CONSIDERED SUBSIDIARY TO THE BID ITEM "TRAFFIC CONTROL (L.S.)"

11. ALL DISTURBED AREAS WITHIN THE RIGHT-OF-WAY SHALL BE SEEDED IN ACCORDANCE WITH THE PLANS AND SPECIFICATIONS, AND PAID BY THE BID ITEM "SEEDING - LS". IN THE EVENT THAT THE DISTURBED AREAS EXCEEDS THE CONSTRUCTION LIMITS SHOWN ON THE PLANS, THOSE AREAS SHALL BE SEEDED. THESE ADDITIONAL AREAS SHALL NOT BE PAID FOR DIRECTLY, BUT SHALL BE CONSIDERED SUBSIDIARY TO THE BID ITEM "SEEDING - LS". AREA ADDITIONS MAY BE DEEMED NECESSARY BY THE OWNER FOR REASONS INCLUDING BUT NOT LIMITED TO: HEAVY EQUIPMENT TRACKING, WHEEL RUTTING, AND TEMPORARY STORAGE OF MATERIALS ON EXISTING GREENSPACE AREAS, OR OTHER CONTRACTOR RELATED EVENTS THAT CAUSE ADDITIONAL DISTURBED AREAS. IN THE EVENT OF WHEEL RUTTING, CONTRACTOR MAY BE REQUIRED TO PROVIDE BLACK TOPSOIL PRIOR TO SEEDING TO BRING THE GROUND BACK TO LEVEL. LABOR AND MATERIALS TO REPAIR WHEEL RUTTING SHALL NOT BE PAID FOR DIRECTLY, BUT SHALL BE CONSIDERED SUBSIDIARY TO THE BID ITEM "SEEDING - LS". ALL SEEDING SHALL BE COMPLETED WITHIN THE TIMEFRAME SPECIFIED IN THE CITY OF TOPEKA SPECIFICATIONS.

12. TEMPORARY EROSION POLLUTION CONTROL STANDARD DETAILS HAVE BEEN INCLUDED. CONTRACTOR SHALL BE REQUIRED TO MEET OR EXCEED THE REQUIREMENTS OF THE STANDARD TECHNICAL SPECIFICATIONS OF THE CITY OF TOPEKA. OWNER RESERVES THE RIGHT TO UNDER-RUN OR OVER-RUN TEMPORARY EROSION CONTROL RELATED ITEMS AS FIELD CONDITIONS ALLOW.

13. SUITABLE BACKFILL MATERIAL SHALL BE ACQUIRED FROM ON SITE MATERIALS, UNLESS OTHERWISE REJECTED ON THE BASIS OF CITY OF TOPEKA SPECIFICATIONS.

14. HAUL AND WASTE IS SUBSIDIARY TO OTHER ITEMS IN CONTRACT.

15. EXISTING CURB AND GUTTER REMOVAL IS INCLUDED IN PAVEMENT REMOVAL QUANTITY. THE CURB AND GUTTER REMOVAL SHALL BE COMPLETED IN PHASES (SEE PHASING PLAN) THAT REQUIRE SAW CUTS ALONG THE ENTIRE LENGTH OF CURB IN THE ASPHALT ROADWAY. SAW CUTS ARE REQUIRED A SHORT DISTANCE FROM THE EDGE OF CURB PRIOR TO REMOVAL TO MAKE SUFFICIENT ROOM FOR CURB FORMS. SAW CUTS SHALL NOT BE PAID FOR DIRECTLY, BUT SHALL BE CONSIDERED SUBSIDIARY TO OTHER ITEMS.

QUANTITY RECAP			
Item	Description	Quantity	Units
1	Mobilization	1	L.S.
2	Pavement Removal	9,088	S.Y.
3	6" Aggregate Base, Type AB-3	9,174	S.Y.
4	8" Non-Reinforced Concrete Pavement	433	S.Y.
5	Concrete Valley Gutter	367.4	S.Y.
6	6" Concrete Driveway	4,002	S.F.
7	Combined Curb & Gutter, Type II	5,035	4,973 L.F.
8	4" Concrete Sidewalk, 5' Wide	382	S.F.
9	Sidewalk Ramp	569	S.F.
10	Adjust Existing Manhole Cover	18	EACH
11	Adjust Existing Valve Cover	4	EACH
12	Remove and Replace Curb Inlet Top, Type I, L=11 ft.	3	EACH
13	Remove and Replace Curb Inlet Top, Type I, L=10 ft.	2	EACH
14	Remove and Replace Curb Inlet Top, Type I, L=7 ft.	10	EACH
15	Remove and Replace Curb Inlet Top, Type I, L=6 ft.	5	EACH
16	15" Storm Sewer (RCP), Class III	73	L.F.
17	15" End Section (RCP)	1	EACH
18	Curb Inlet, Type II-P	1	EACH
19	Connect to Existing Structure	1	EACH
20	Large Tree Removal	1	EACH
21	Clearing and Grubbing	1	L.S.
22	Contractor Construction Staking	1	L.S.
23	Inlet Protection (Curb)	26	EACH
24	Mailbox Remove and Reset	32	EACH
25	Pavement Marking(Epoxy)(Yellow)(4")	4,114	L.F.
26	Pavement Marking(Epoxy)(White)(Sharrow)	24	EACH
27	Temporary Seeding & Mulching	0.4	ACRES
28	Sodding	1,660	S.Y.
29	Sign (Remove and Reset)	13	EACH
30	Driveway Entrance Access Provisions	1	L.S.
31	Traffic Control	1	L.S.

ADD ALTERNATE 1
(Asphalt Street Option)

Item	Description	Quantity	Units
A1.1	Unclassified Excavation	1,690	3,436 C.Y.
A1.2	9" Asphaltic Concrete Pavement	6,727	6,272 S.Y.

ADD ALTERNATE 2
(Concrete Street Option)

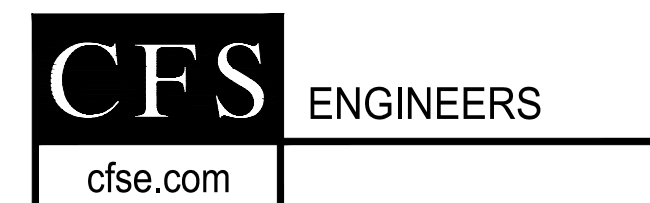
Item	Description	Quantity	Units
A2.1	Unclassified Excavation	1,150	2,890 C.Y.
A2.2	7" Reinforced Concrete Pavement	6,727	6,272 S.Y.

G:\Shared drives\231016\CADD\Year 2\231016-Ph2 Gen Notes & Qty Recap.dwg

2	3/25/26	Revised Qty for Pmnt, Excavation, C&G	ATP	MJM
NO.	DATE:	REVISION	BY:	APP'D

DRAWN BY: ATP

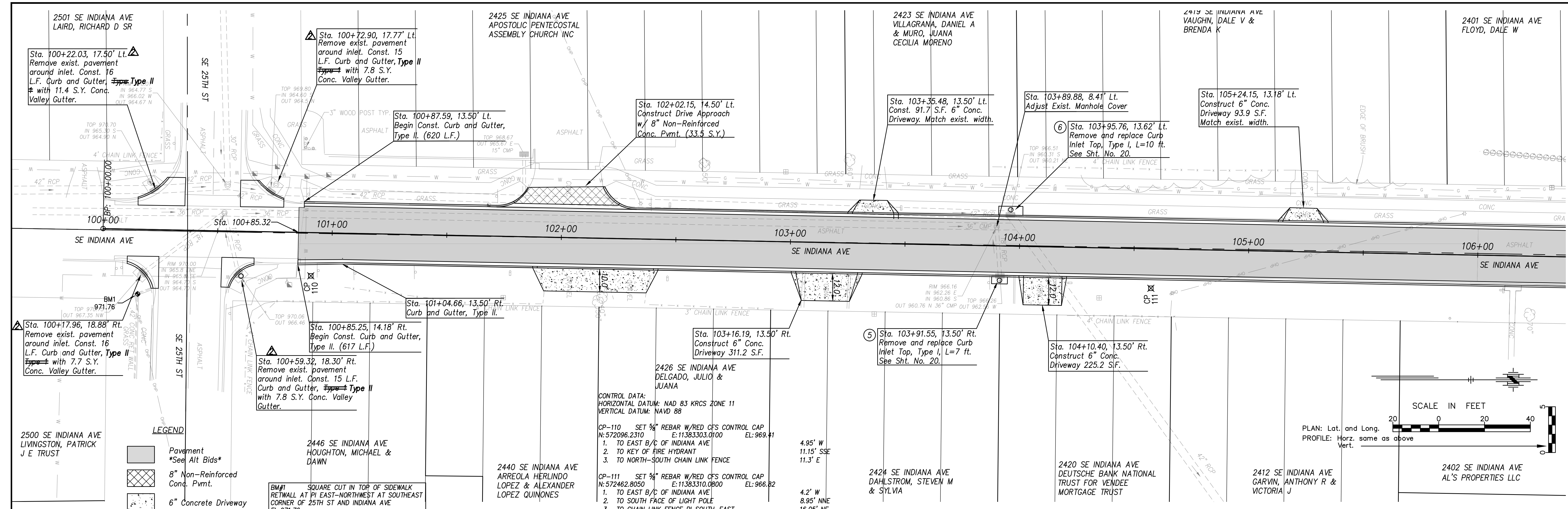
APP'D BY: MJM



STREET IMPROVEMENT
CITY OF TOPEKA
SE INDIANA STREET

GENERAL NOTES AND
QUANTITIES RECAP

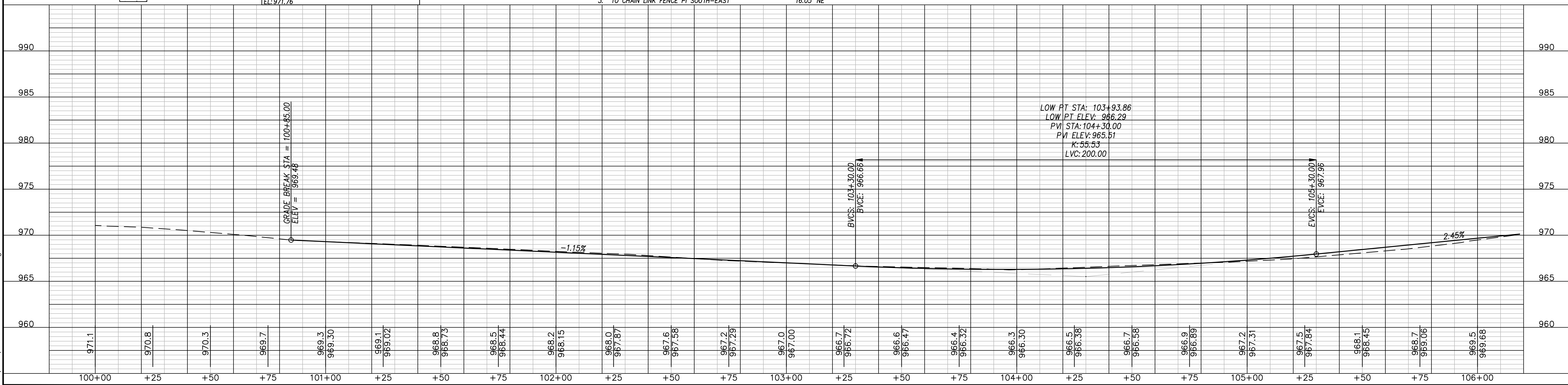
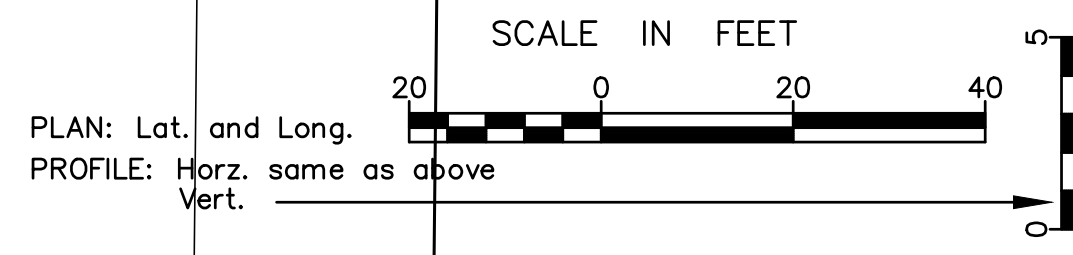
DATE: Feb. 2026
SHEET: 02 of 66
PROJ.: 841099.09
501107.10



CONTROL DATA:
 HORIZONTAL DATUM: NAD 83 KRCS ZONE 11
 VERTICAL DATUM: NAVD 88

CP-110 SET 3/8\"/>

CP-111 SET 3/8\"/>



G:\Shared drives\231016\CADD\Year 2\231016\PI2-Plan Profile-Indiana.dwg

NO.	DATE	REVISION	BY	APP'D
2	3/25/26	Changed Type I C&G to Type II	ATP	MJM

DRAWN BY: ATP
 APP'D BY: MJM

CFS ENGINEERS
 cfse.com

TOPEKA
 Public Works
 ENGINEERING
 620 SE MADISON ST. • 2nd Floor • TOPEKA, KS 66607
 Phone: (785) 368-3842 • Fax: (785) 368-3881

STREET IMPROVEMENT
 CITY OF TOPEKA
 SE INDIANA STREET

PLAN AND PROFILE
 SE INDIANA STREET

DATE: Feb, 2026
 SHEET: 04 of 66
 PROJ.: 841099.09
 501107.10